



PROTECTION WITH COMFORT



EURO SAFETY FOOTWEAR (INDIA) LIMITED

Coprorate Office : EPIP, Shastripuram, Agra - 282007 (IN)

office@eurosafetyfootwear.com www.eurosafetyfootwear.com

INDUSTRIAL FOOTWEAR
CATALOGUE-2023-24



WHO WE ARE

Euro Safety Footwear was incorporated in 2004 to manufacture export industrial safety footwear to Europe. It was an extension of its sister concern - Roger Industries Ltd. that has been into lifestyle foot wear manufacturing for over 40 years now. Over the last 18 years, Euro Safety has evolved beyond safety foot wear, into a group of companies manufacturing and distributing a wide range of PPEs and Hygiene products.



MATERIALS

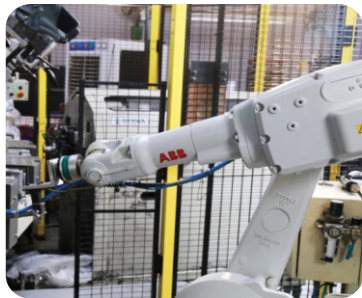
Euro Safety Footwear believes that the right selection of raw materials and suppliers is critical to consistent performance of a safety footwear. We therefore have tied up with the best suppliers of each raw materials, including BASF (Germany).

Some of Our vendor support



INFRASTRUCTURE

Euro Safety Footwear is spread over an area of 17000 m2 with total covered area of 35000 m2. With a total installed capacity of 2.2 million pairs of Injection shoes and 0.5 million pairs of Cemented shoes, it is India's largest integrated safety shoe manufacturing unit. All manufacturing units under Euro Safety Footwear are ISO 9001, ISO 14001 & SA 8000 certified. Equipped with best in class shoe manufacturing technology from DESMA and Robot integration from ABB, Euro Safety strives to be the most efficient and cost effective manufacturing unit in the country.



PRODUCT & DESIGN

Euro Safety works closely with a team of inhouse and Italian designers to conceptualise and produce latest moulds and footwear designs. We have more than 20 different outsole designs across applications and standards. Euro Safety has capability to produce shoes with most challenging technologies including Metal free, Rubber & TPU outsoles, Waterproof protection, Chainsaw protection, Turn locks & Tracking technologies.

QUALITY & TESTING

To maintain an extremely high and consistent level of quality, Euro Safety has an independent team of AQL Inspectors which are working under an umbrella pattern and report directly to the higher management. The entire reporting system is ERP based helping the individual processes to focus on areas of improvement. Euro Safety Footwear has an inhouse testing laboratory to test all the parameters as per EN 20345. We test all incoming materials rigorously to ensure their compliance. Various processes and final products are subjected to controlled batch testing.



SUSTAINABILITY

Sustainability is not just a buzz anymore, it has become the way of life. At Euro Safety, we understand this and did our bit. Euro Safety Footwear has installed one of the largest Solar Power plant in the industrial area, which caters 80% total of its power consumption. From 2021 to 2023, we have reduced are Co₂ footprint by more than 400%.Euro Safety is extensively using leathers from LWG certified tanneries, GRS certified textiles and FSC compliant packaging materials.



We work closely with various Indian and overseas labs to test, certify and validate our products.



**ARTICLE :** 105-23073-S3S

UPPER : BUFF NUBUCK
 LINING : AEROSPACE MESH
 SOCK : TEXTILE WITH PERFORATED EVA MOULDED
 INSOLE : COMPOSITE
 TOE CAP : FIBER GLASS
 SOLE : PU/PU
 MOULD : BOSNIA
 SIZE : 39-48
 COLOUR : BLACK

**ARTICLE :** 105-22993-S3S

UPPER : BUFF NUBUCK
 LINING : AEROSPACE MESH
 SOCK : TEXTILE WITH PERFORATED EVA MOULDED
 INSOLE : KEVLAR
 TOE CAP : FIBER GLASS
 SOLE : PU/PU
 MOULD : BOSNIA
 SIZE : 39-48
 COLOUR : BLACK

**ARTICLE :** 105-23683-S7S

UPPER : BUFF CRAZY
 LINING : WATER PROOF NYLEX/AEROSPACE MESH
 SOCK : TEXTILE WITH PU MOULDED
 INSOLE : COMPOSITE
 TOE CAP : FIBER GLASS
 SOLE : PU/PU
 MOULD : BOSNIA
 SIZE : 39-48
 COLOUR : BROWN

**ARTICLE :** 105-13683-S7S

UPPER : BUFF CRAZY
 LINING : AEROSPACE MESH
 SOCK : TEXTILE WITH PU MOULDED
 INSOLE : COMPOSITE
 TOE CAP : FIBER GLASS
 SOLE : PU/PU
 MOULD : BOSNIA
 SIZE : 39-48
 COLOUR : BROWN/ORANGE

**ARTICLE :** 105-23666-S3S

UPPER : BUFF NUBUCK
 LINING : AEROSPACE MESH
 SOCK : TEXTILE WITH PU MOULDED
 INSOLE : COMPOSITE
 TOE CAP : FIBER GLASS
 SOLE : PU/PU
 MOULD : BOSNIA
 SIZE : 48
 COLOUR : BLACK/ORANGE

**ARTICLE :** 105-13682-S3S

UPPER : BUFF NUBUCK
 LINING : AEROSPACE MESH
 SOCK : TEXTILE WITH PU MOULDED
 INSOLE : COMPOSITE
 TOE CAP : FIBER GLASS
 SOLE : PU/PU
 MOULD : BOSNIA
 SIZE : 39-48
 COLOUR : BLACK



**ARTICLE :** 95-23500-S7S

UPPER : BUFF NUBUCK
 LINING : TEXTILE NYLEX
 SOCK : TEXTILE WITH PU MOULDED
 INSOLE : COMPOSITE
 TOE CAP : FIBER GLASS
 SOLE : EVA/RUBBER
 MOULD : ALABAMA
 SIZE : 36-48
 COLOUR : BLACK

**ARTICLE :** 95-23500-S7S

UPPER : BUFF NUBUCK
 LINING : TEXTILE NYLEX
 SOCK : TEXTILE WITH PU MOULDED
 INSOLE : COMPOSITE
 TOE CAP : FIBER GLASS
 SOLE : EVA/RUBBER
 MOULD : ALABAMA
 SIZE : 36-48
 COLOUR : CORN

**ARTICLE :** 93-13700-SIPL

UPPER : TEXTILE TPU LAMINATED
 LINING : TEXTILE LYCRA
 SOCK : TEXTILE WITH PU MOULDED
 INSOLE : COMPOSITE
 TOE CAP : FIBER GLASS
 SOLE : PHYLONE/RUBBER
 MOULD : ALABAMA
 SIZE : 36-48
 COLOUR : BLACK/ORANGE

**ARTICLE :** 93-13699-SIPL

UPPER : TPU LAMINATED KNITTED TEXTILE
 LINING : AEROSPACE MESH
 SOCK : TEXTILE WITH PU MOULDED
 INSOLE : COMPOSITE
 TOE CAP : FIBER GLASS
 SOLE : PHYLONE/RUBBER
 MOULD : ALABAMA
 SIZE : 36-48
 COLOUR : BLACK/GREY

**ARTICLE :** 93-13698-SIPL

UPPER : PRINTED TEXTILE
 LINING : AEROSPACE MESH
 SOCK : TEXTILE WITH PU MOULDED
 INSOLE : COMPOSITE
 TOE CAP : FIBER GLASS
 SOLE : PHYLONE/RUBBER
 MOULD : ALABAMA
 SIZE : 36-48
 COLOUR : BLUE/BLACK

**ARTICLE :** 93-13698-SIPL

UPPER : PRINTED TEXTILE
 LINING : AEROSPACE MESH
 SOCK : TEXTILE WITH PU MOULDED
 INSOLE : COMPOSITE
 TOE CAP : FIBER GLASS
 SOLE : PHYLONE/RUBBER
 MOULD : ALABAMA
 SIZE : 36-48
 COLOUR : GREY/TURQUOISE



**ARTICLE :** 104-23663-S3S

UPPER : BUFF CRAZY
 LINING : TEXTILE AEROSPACE
 SOCK : TEXTILE/PU MOULDED
 INSOLE : COMPOSITE
 TOE CAP : FIBER GLASS
 SOLE : PHYLON/RUBBER
 MOULD : ARIZONA
 SIZE : 42
 COLOUR : BROWN/ ORANGE

**ARTICLE :** 104-23662-S3S

UPPER : BUFF CRAZY
 LINING : AEROSPACE
 SOCK : TEXTILE/PU MOULDED
 INSOLE : COMPOSITE
 TOE CAP : FIBER GLASS
 SOLE : PHYLON/RUBBER
 MOULD : ARIZONA
 SIZE : 42
 COLOUR : BROWN/ORANGE

**ARTICLE :** 104-23661-S3

UPPER : COW NUBUCK/MICROFIBER
 LINING : AEROSPACE
 SOCK : TEXTILE/PU MOULDED
 INSOLE : COMPOSITE
 TOE CAP : FIBER GLASS
 SOLE : PHYLON/RUBBER
 MOULD : ARIZONA
 SIZE : 42
 COLOUR : BLACK/YELLOW

**ARTICLE :** 104-23659-S3S

UPPER : COW SMOOTH
 LINING : TEXTILE AEROSPACE
 SOCK : TEXTILE/PU MOULDED
 INSOLE : COMPOSITE
 TOE CAP : FIBER GLASS
 SOLE : PHYLON/RUBBER
 MOULD : ARIZONA
 SIZE : 42
 COLOUR : BLACK/YELLOW

**ARTICLE :** 104-23665-S3S

UPPER : COW MILLED/MICROFIBER
 LINING : AEROSPACE
 SOCK : TEXTILE/PU MOULDED
 INSOLE : COMPOSITE
 TOE CAP : FIBER GLASS
 SOLE : PHYLON/RUBBER
 MOULD : ARIZONA
 SIZE : 42
 COLOUR : FOREST GREEN/YELLOW

**ARTICLE :** 104-23664-S3S

UPPER : COW NUBUCK
 LINING : AEROSPACE
 SOCK : TEXTILE/PU MOULDED
 INSOLE : COMPOSITE
 TOE CAP : FIBER GLASS
 SOLE : PHYLON/RUBBER
 MOULD : ARIZONA
 SIZE : 42
 COLOUR : CORN/BLACK



**ARTICLE :** 97-13634-SI

UPPER : BUFF SUEDE/TEXTILE
 LINING : TEXTILE NYLEX
 SOCK : TEXTILE WITH PU MOULDED
 INSOLE : N/A
 TOE CAP : STEEL
 SOLE : PHYLONE/RUBBER
 MOULD : BROOKLYN
 SIZE : 39-47
 COLOUR : BLACK/NEON ORANGE

**ARTICLE :** 97-12623-SI

UPPER : MICROFIBER TPU LAMINATED
 LINING : TEXTILE NYLEX
 SOCK : TEXTILE WITH EVA MOULDED
 INSOLE : COMPOSITE
 TOE CAP : FIBER GLASS
 SOLE : PHYLONE/RUBBER
 MOULD : BROOKLYN
 SIZE : 39-46
 COLOUR : BLACK/NEON GREEN

**ARTICLE :** 108-13651-SIPL

UPPER : MICROFIBER/TEXTILE
 LINING : AEROSPACE MESH
 SOCK : TEXTILE WITH PERFORATED EVA MOULDED
 INSOLE : COMPOSITE
 TOE CAP : FIBER GLASS
 SOLE : PHYLONE/RUBBER
 MOULD : BROOKLYN
 SIZE : 39-46
 COLOUR : BLACK/GREY

**ARTICLE :** 108-13652-SIPL

UPPER : MICROFIBER/TEXTILE
 LINING : AEROSPACE MESH
 SOCK : TEXTILE WITH PERFORATED EVA MOULDED
 INSOLE : COMPOSITE
 TOE CAP : FIBER GLASS
 SOLE : PHYLONE/RUBBER
 MOULD : BROOKLYN
 SIZE : 39-46
 COLOUR : BLACK/NEON GREEN

**ARTICLE :** 89-13718-SIPL

UPPER : KNITTED UPPER/TPU
 LINING : TEXTILE MESH
 SOCK : TEXTILE EVA MOULDED
 INSOLE : COMPOSITE
 TOE CAP : FIBER GLASS
 SOLE : PU/PU
 MOULD : MONACO
 SIZE : 39-48
 COLOUR : BLACK/GREY

**ARTICLE :** 89-13716-SIP

UPPER : TEXTILE MESH/TPU
 LINING : TEXTILE MESH
 SOCK : TEXTILE EVA MOULDED
 INSOLE : COMPOSITE
 TOE CAP : FIBER GLASS
 SOLE : PU/PU
 MOULD : MONACO
 SIZE : 39-48
 COLOUR : BLACK/GREEN





ARTICLE : 102-13725-S1P

UPPER : MICRO FIBER SUEDE/ TPU/TEXTILE MESH
 LINING : AEROSPACE MESH
 SOCK : TEXTILE WITH PU MOULDED
 INSOLE : COMPOSITE
 TOE CAP : FIBER GLASS
 SOLE : PU/HEEL INSERT
 MOULD : LISBON
 SIZE : 41-46
 COLOUR : BLACK/NEON BLUE



ARTICLE : 101-23715-S3S



UPPER : MICROFIBER NUBUCK
 LINING : TEXTILE MESH
 SOCK : TEXTILE EVA MOULDED
 INSOLE : COMPOSITE
 TOE CAP : FIBER GLASS
 SOLE : PU/HEEL INSERT
 MOULD : LISBON
 SIZE : 41-46
 COLOUR : BLACK



ARTICLE : 143-23655-S3S HRO



UPPER : MICROFIBER SUEDE
 LINING : AEROSPACE MESH
 SOCK : TEXTILE WITH PERFORATED EVA MOULDED
 INSOLE : COMPOSITE
 TOE CAP : FIBER GLASS
 SOLE : PU/RUBBER
 MOULD : ARGOS
 SIZE : 42
 COLOUR : BLACK/RED



ARTICLE : 102-13727-S1

UPPER : MICRO FIBER SUEDE/ TPU/TEXTILE MESH
 LINING : AEROSPACE MESH
 SOCK : TEXTILE WITH PU MOULDED
 INSOLE : NON WOVEN
 TOE CAP : FIBER GLASS
 SOLE : PU/HEEL INSERT
 MOULD : LISBON
 SIZE : 41-46
 COLOUR : BLACK/NEON GREEN



ARTICLE : 101-13714-S3S



UPPER : MICROFIBER NUBUCK
 LINING : TEXTILE MESH
 SOCK : TEXTILE EVA MOULDED
 INSOLE : COMPOSITE
 TOE CAP : FIBER GLASS
 SOLE : PU/HEEL INSERT
 MOULD : LISBON
 SIZE : 41-46
 COLOUR : BLACK



ARTICLE : 143-13654-S3S HRO



UPPER : MICROFIBER SUEDE
 LINING : AEROSPACE MESH
 SOCK : TEXTILE WITH PERFORATED EVA MOULDED
 INSOLE : COMPOSITE
 TOE CAP : FIBER GLASS
 SOLE : PU/RUBBER
 MOULD : ARGOS
 SIZE : 42
 COLOUR : BLACK/GREY




ARTICLE : 110-23696-S7S HRO

UPPER : BUFF SMOOTH/TEXTILE
 LINING : WATER PROOF NYLEX/AEROSPACE MESH
 SOCK : TEXTILE WITH PU MOULDED
 INSOLE : COMPOSITE
 TOE CAP : FIBER GLASS
 SOLE : PU/RUBBER
 MOULD : BOSTON
 SIZE : 37-50
 COLOUR : BLACK/NEON ORANGE


ARTICLE : 131-23464-S7S

UPPER : BUFF CRAZY / TPU
 LINING : TEXTILE NYLEX WATERPROOF MEMBRAN
 SOCK : TEXTILE/PU MOULDED
 INSOLE : COMPOSITE
 TOE CAP : STEEL
 SOLE : EVA/RUBBER
 MOULD : TOBACO
 SIZE : 41
 COLOUR : BLACK/OLIVE


ARTICLE : 145-23560-S7S

UPPER : BUFF CRAZY
 LINING : TEXTILE NYLEX
 SOCK : TEXTILE WITH PU MOULDED
 INSOLE : COMPOSITE
 TOE CAP : FIBER GLASS
 SOLE : EXTRALITE EVA
 MOULD : LUTON
 SIZE : 42
 COLOUR : BROWN


ARTICLE : 110-13695-S7S HRO

UPPER : BUFF SMOOTH/TEXTILE
 LINING : WATER PROOF NYLEX/AEROSPACE MESH
 SOCK : TEXTILE WITH PU MOULDED
 INSOLE : COMPOSITE
 TOE CAP : FIBER GLASS
 SOLE : PU/RUBBER
 MOULD : BOSTON
 SIZE : 37-50
 COLOUR : BLACK/NEON GREEN


ARTICLE : 131-23464-S7S

UPPER : COW NUBUCK TPU
 LINING : TEXTILE NYLEX WATERPROOF MEMBRAN
 SOCK : TEXTILE/PU MOULDED
 INSOLE : COMPOSITE
 TOE CAP : STEEL
 SOLE : EVA/RUBBER
 MOULD : TOBACO
 SIZE : 41
 COLOUR : BLACK/RED


ARTICLE : 96-13456-S1PL

UPPER : KNITTED UPPER (RECYCLED)
 LINING : TEXTILE MESH
 SOCK : TEXTILE PU FOAM MOULDED
 INSOLE : COMPOSITE
 TOE CAP : FIBER GLASS
 SOLE : EVA/RUBBER VIBRAM
 MOULD : DAKAER
 SIZE : 41
 COLOUR : NEON GREEN





ARTICLE : 38-31286-S3S

TECHNICAL SPECIFICATION

UPPER : BUFF CRAZY
 LINING : TEXTILE AEROSPACE
 SOCK : TEXTILE/PU MOULDED
 INSOLE : KEVLAR
 TOE CAP : STEEL TOE
 SOLE : BOSTON
 MOULD : BOSTON
 SIZE : 37-48
 COLOUR : BLACK/ORANGE

- Cut Protection Class 1 & 2
- Quick Lacing Hooks
- Reinforced Pull-on Loop
- Reflective Fabric
- Full Leather Tongue



CLASS 3



ARTICLE : 131-33604-S3S

TECHNICAL SPECIFICATION

UPPER : BUFF CRAZY/MICROFIBER
 LINING : TEXTILE AEROSPACE
 SOCK : TEXTILE/PU MOULDED
 INSOLE : KEVLAR
 TOE CAP : STEEL TOE
 SOLE : TOBAGO
 MOULD : TOBAGO
 SIZE : 41
 COLOUR : BLACK/RED

- Full grain anfibio leather upper.
- 200J Steel toe cap
- composite anti-penetration midsole protection.
- Breathable Lining - (As per EN requirement).
- Protection against class 3.
- Speed lacing system and wide opening bellows tongue.



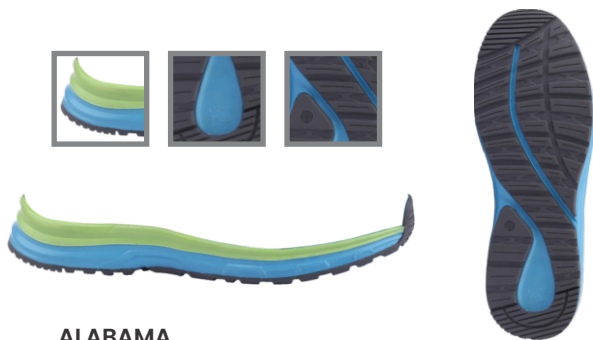


ARIZONA

Wide Fitting

- EVA/RUBBER
- Slip Resistant SR
- Shock Absorbent
- RUBBER Overcap on Toe

- Size 42
- Toe - Fiber Glass
- Dual Density EVA
- Dual Colour Rubber



ALABAMA

- Phylon/Rubber
- Slip Resistant SR
- Shock Absorbent
- Light Weight

- Wide Fitting
- Toe Cap - Fiber Glass
- Dual Density Phylon
- Dual Colour Rubber
- Size 36-48



BROOKLYN

Wide Fitting

- Phylone/Rubber
- Slip Resistant SR
- Flat Sole Profile
- Light Weight

- Size 39-46/39-47
- Toe : Fiber Glass/Steel



LISBON

- PU
- Slip Resistant SR
- Shock Absorbent
- Light Weight

- ETPU Insert at Heel
- Size 41-46
- Toe : Steel/ Fiber Glass



ARGOS

PU/RUBBER	Wide Fitting
Slip Resistant SR	Size 41
Shock Absorbent	Toe : Fiber Glass
HRO 300c (Rubber Outsole)	Over Cap/Without Over Cap



BOSTON

PU/PU	Ladder Support at Heel
PU/Rubber	HRO 300c (Rubber Outsole)
Robust & Study Design	Size 37-50
Slip Resistant SR	
Shock Absorbent	



MANACO

PU/PU	Wide Fitting
Slip Resistant SR	Size 39-48
Shock Absorbent	Toe : Fiber Glass
Light Weight	



TOBACCO

EVA/RUBBER	Wide Fitting
Slip Resistant SR	Size 41
Shock Absorbent	Toe : Steel
HRO 300c (Rubber Outsole)	

SPECIFICATION/CATEGORIES OF SAFETY FOOTWEAR AS PER EN ISO 20345

SAFETY FOOTWEAR		TABLE ACCORDING TO STANDARD EN ISO 20345:2022										
CLASS	Protective toe cap	Mandatory slip resistance (similar to SRA)	Closed seat region (fully enclosed heel)	A Electrical Ω resistance (0.1-1000 M)	E Energy absorption under the heel	Anti-puncture protection			WPA Water-penetration and absorption	Cleated outsole	WR	
						P Metal insert Type P	PL Non-metal insert Type PL	PS Non-metal insert Type PS				
I/II	SB	•	•	•	•							
I	SI	•	•	•	•							
I	SIP	•	•	•	•	•						
I	S1PL	•	•	•	•		•					
I	S1PS	•	•	•	•			•				
I	S2	•	•	•	•				•			
I	S3	•	•	•	•		•			•		
I	S3L	•	•	•	•			•			•	
I	S3S	•	•	•	•				•		•	
II	S4	•	•	•	•							
II	S5	•	•	•	•	•						
II	S5L	•	•	•	•		•					
II	S5S	•	•	•	•			•				
I	S6	•	•	•	•						•	
I	S7	•	•	•	•		•				•	
I	S7L	•	•	•	•			•			•	
I	S7S	•	•	•	•				•		•	

Basic Requirements

SB → **S** **NEW**

- SB**: TOE PROTECTION 200 J + 15 kN
- S**: RESISTANCE, SAFETY AND PERFORMANCE OF MATERIALS
- NEW**: FOOTWEAR ERGONOMICS AND COMFORT
- NEW**: SLIP RESISTANCE CERAMIC FLOOR + detergent

Additional requirements and markings

E **A** **P** **NEW PL** **NEW PS** **NEW WPA** **WR** **FO** **HRO**

- E**: ENERGY ABSORPTION OF SEAT REGION
- A**: ANTISTATIC FOOTWEAR
- P**: METALLIC PERFORATION RESISTANT INSERT WITH CONICAL NAIL (ø=4,5 mm)
- NEW PL**: NON-METALLIC PERFORATION RESISTANT INSERT WITH CONICAL NAIL (ø=4,5 mm)
- NEW PS**: NON-METALLIC PERFORATION RESISTANT INSERT WITH CONICAL NAIL (ø=3 mm)
- NEW WPA**: UPPER RESISTANT TO WATER PENETRATION AND ABSORPTION
- WR**: WATER RESISTANT FOOTWEAR
- FO**: SOLE RESISTANT TO FUEL OIL
- HRO**: SOLE RESISTANT TO HOT CONTACT

HI **CI** **M** **AN** **CR** **C** **NEW LG** **NEW SC** **NEW SR**

- HI**: HEAT INSULATION
- CI**: COLD INSULATION
- M**: METATARSAL PROTECTION
- AN**: ANKLE PROTECTION
- CR**: CUT RESISTANCE
- C**: PARTIALLY CONDUCTIVE FOOTWEAR
- NEW LG**: LADDER GRIP SYSTEM
- NEW SC**: SCUFF CAP ABRASION RESISTANCE
- NEW SR**: SLIP RESISTANCE CERAMIC FLOOR + GLYCERINE

Identification codes

S	Toe protection 200 J+15 kN
E	Energy absorption of seat region
A	Antistatic footwear
P	Metallic perforation resistant insert with conical nail (ø 4,5 mm)
NEW PL	Non-metallic perforation resistant insert with conical nail (ø 4,5 mm)
NEW PS	Non-metallic perforation resistant insert with conical nail (ø 3mm)
NEW WPA	Upper resistant to water penetration and absorption
WR	Water resistant footwear
FO	Sole resistant to fuel oil
HRO	Sole resistant to hot contact
HI	Heat insulation
CI	Cold insulation
M	Metatarsal protection
AN	Ankle protection
CR	Cut resistance
C	Partially conductive footwear
NEW LG	Ladder grip system
NEW SC	Scuff cap abrasion resistance
NEW SR	Slip resistance ceramic floor + glycerine

CERTIFICATIONS

